



INSPIRED FLOORING
SINCE 1962

Jacobsen®



**FOR NEARLY
60 YEARS
JACOBSEN HAS
BEEN BRINGING
NEW ZEALANDERS
THE VERY BEST
IN WORLD-CLASS
FLOORING.**

Founded on outstanding service,
technical expertise and dependable
relationships, the Jacobsen name
has since grown to stand for style,
texture, innovation and performance.

Our international brands and
selections provide an unparalleled
range of inspired solutions to cover
just about any Kiwi floorspace –
from the finest residential homes,
to contemporary offices and the most
demanding of public spaces.

We've grown a lot from where we
first started as a small family company.
Today, our Jacobsen team is over
60 strong and operates throughout
New Zealand. But what hasn't
changed is our passion for flooring
and our commitment to inspiring
New Zealanders to create the best
spaces for life.



INSPIRED



BY WHERE LIFE HAPPENS.

We're proud to be a part of New Zealanders' lives by helping with their design journey.

Jacobsen's unique approach stems from an innate curiosity about people; how they live, and how their aspirations shape the spaces they create to work, relax and play in.

Because to Jacobsen, the floor is where life happens. It defines the soul of a space, it carries stories, weathers life, supports and connects people. A floor is more than just a floor; it's a playmat, a workspace, a dancefloor, or even a picnic spot. More than just a design element, the floor is the backdrop of a scene, and the foundation of a home or workspace.

Which is why Jacobsen's focus is about curating the best flooring from around the world, inspiring everyday Kiwis with big dreams to transform those dreams into reality. We pair design-led thinking with the latest in technology to bring you flooring that not only looks great, but also lasts the distance so you can get the most out of your environment. Through colour and design, texture and sustainable materials, Jacobsen flooring goes further than providing practical solutions. It creates mood, sets pace and inspires life.

Because when you get down to it, a floor is never just a floor. A floor is where life happens, and it's best to get the floor right—right from the start.



INSPIRED



BY OUR PEOPLE.

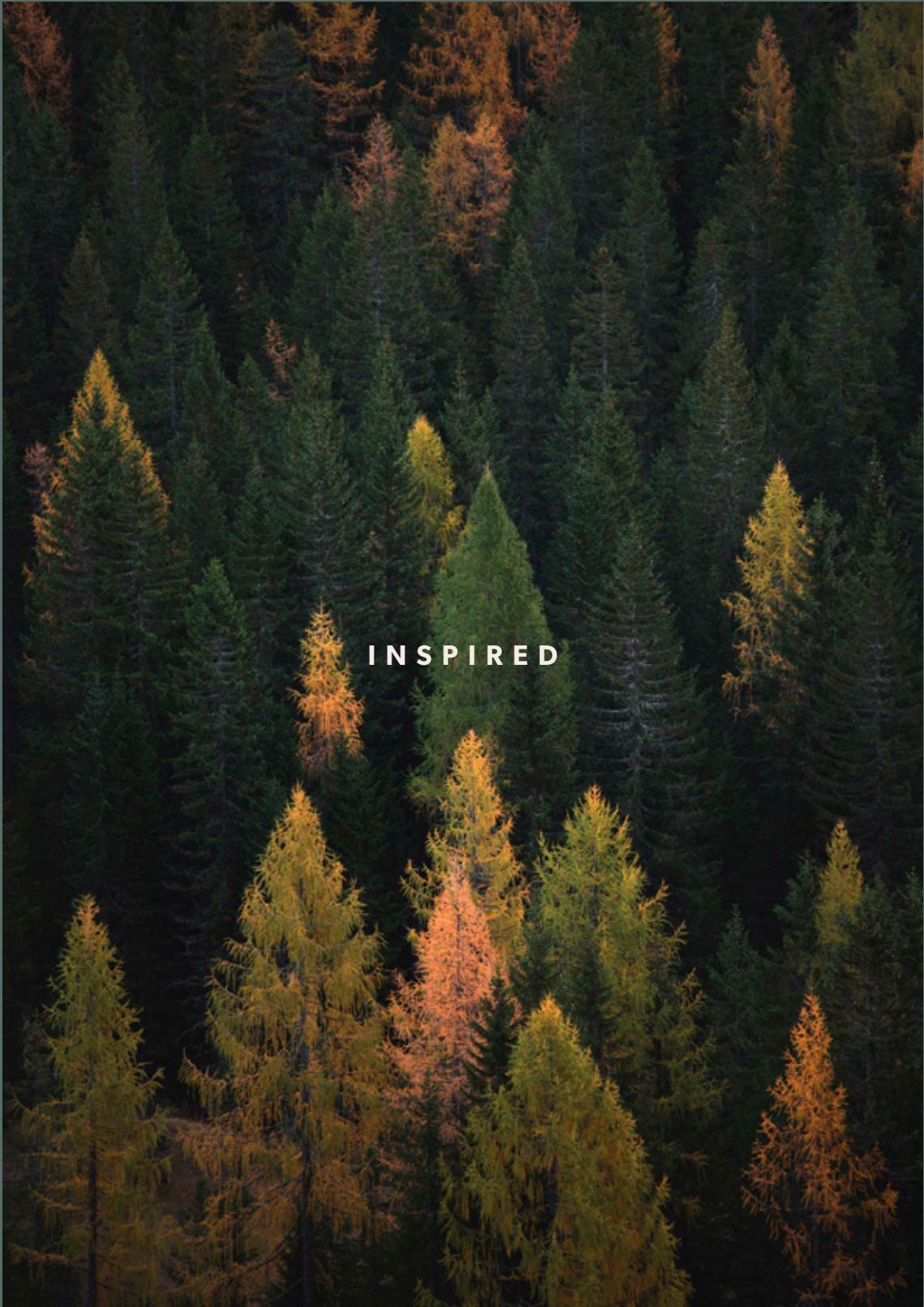


**Jacobsen's
strength is in
its people.**

We're a wholly-owned New Zealand family business founded on strong family values.

Our 60 employees are like family – many have been with us for more than 10 years – and we are deeply proud and committed to every one of them.

We're in this for the long haul. And with unrivaled expertise and an innovative spirit we're confident we'll be doing right by our customers for many years yet.



INSPIRED

Commitment to people and planet

Jacobsen appreciates the care and consideration you put into creating the spaces where you live, work and play. Which is why we take responsibility for making your choice a little easier by working with our suppliers and partners to provide environmentally sound flooring systems.

We have implemented many initiatives to keep our environmental and ethical standards high, and ensure we are providing the best flooring systems for the environment and the community.

We are committed to:

- Sourcing only product that meets ISO14001 environmental standards.
- Sourcing only from suppliers who adhere to the highest standards of ethical business.
- Assessing products for their lifetime environmental impacts during manufacture, installation and maintenance.
- Reducing carbon emissions in line with our Toitu Envirocare carbon reduce certification and approved targets.
- Reducing waste throughout every aspect of our operations.

BY A SUSTAINABLE FUTURE.



We have committed to our company value 'Create Positive Impact' by focusing on our people, community, and the environment. To ensure we are held accountable for focusing on and reducing our carbon emissions in line with global standards, Jacobsen joined the Toitu carbon reduce certification programme and achieved certification in November 2019. To further our commitment, Jacobsen are proud to have been the 101st signatory to join the Climate Leaders Coalition which was launched to promote business leadership and collective action in regards to climate change.



Construction and industrial waste is a significant challenge across New Zealand. As part of our ongoing commitment to the environment and socially responsible flooring systems, Jacobsen launched Re.Form. A programme that utilises the principles of the waste hierarchy putting emphasis on the re-use of flooring before considering recycling, and with disposal or landfill as a last resort. We work with our entire value chain to ensure as much installation waste and end of life waste can be removed from landfill.



Creating positive impact and understanding the environmental burden of doing business is a core value for Jacobsen. The initial success of Re.Form resulted in the programme being named a finalist in the 2020 Sustainable Business Awards in the 'Outstanding Collaboration' category, illustrating our active work towards protecting the environment.



At Jacobsen we are committed to creating a sustainable sourcing culture and work with suppliers who put their people and environment at the forefront of their business. The Re.spect icon signifies the expectations we have of them with regard to, ethical business, labour and human rights, health and safety, environmental sustainability and corporate social responsibility. Supply chain transparency is crucial and our suppliers must comply with and sign our 'code of conduct' before we commit to any business undertaking, ensuring they meet or surpass a minimum set of standards.



INSPIRED

SENIOR LIVING

When choosing flooring for an aged care home, we know it's about more than just aesthetics. The flooring has to accommodate a multitude of needs. From day rooms, corridors, bedrooms to bathrooms, we understand the balance of comfort and safety. It must be of the highest standard. Our expertise in aged care and design thinking means we understand the importance of creating connections and communities in safe and welcoming environments, for all levels of care.

It's about wellbeing and living, floors that feel like home and bringing people together. Welcoming environments, for all levels of care.



BY OUR ENVIRONMENTS.



CONTEMPORARY WORKPLACE

As the modern open plan workplace evolves a more holistic approach to design is needed. Jacobsen's flooring ideas are helping to create flexible, adaptive, dynamic spaces that encourage collaboration and optimise employee well-being.

Flooring is essential to fostering a healthy work environment by providing benefits such as improved air quality, sound control and comfort. Our extensive range of flooring solutions offer limitless design possibilities for workplaces to express brand identity and inspire employees.

EDUCATION

Student, educator and administrator comfort is key to creating effective educational environments where the next generation can grow and prepare to take its place in the world.

Jacobsen's high standards for healthy flooring provide the foundation for high quality spaces that create engagement, support teaching and inspire learning. Our extensive range of comfortable, clean and durable flooring solutions support all manner of practical requirements from laboratories to libraries and are suitable for preschoolers right through to university students.



RESIDENTIAL

We understand how much care is put into creating spaces where you live and play. They're important and they've got to be right. We're all for living life to the full, which is why our residential range is designed for New Zealanders, with our unique Kiwi lifestyles in mind.

We pair design-led thinking with the latest in technology to bring you floors that not only look great, they also last the distance. And with our Breathe Easy carpet range improving indoor air quality we're taking care of people's health and wellbeing too.

It's about inspiration and curation, helping everyday Kiwis with big dreams, transform those dreams into reality.



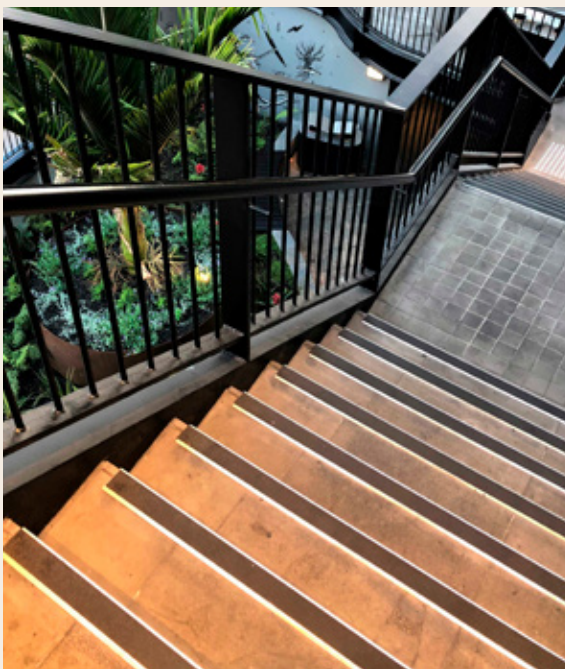
HEALTHCARE

At Jacobsen, we understand the special demands for constructing high quality hospitals and healthcare facilities.

We provide critical support for a wide range of highly specialised environments from operating rooms to receptions. Our extensive range of healthcare flooring solutions account for the safety, comfort and infection control of patients and staff as well as considering the high durability demanded by these spaces.

BUILDING SYSTEMS

Jacobsen are pleased to be the New Zealand distributors of world-leading building systems such as Dintel Structural Walling, EOS, Kalwall, NBK Terracotta and Rodeca. Whether it's a transparent panel that allows natural light to enter the building or a terracotta rain facade, Jacobsen can help you find the solution and design for your building needs.



TREDSAFE

Tredsafe are a market leader in flooring safety and innovation, manufacturing a comprehensive range of durable, attractive stair-nosing, flooring-trims and accessories for all flooring types.

IN GOOD COMPANY.

We're proud to have partnered with many of New Zealand's highest profile companies and organisations, inspiring and creating better spaces for life.

EDUCATION

ACG Tauranga Sports Complex
Albany Senior High School
Ao Tawhiti Unlimited
Discovery School
Auckland Girls Grammar Library
Avondale College
BLENNZ Homai Campus
Christchurch Boys High School Hall
Deakin University, CADET Building
Endeavour School
AUT Four Seasons Restaurant
Haeata Community Campus
Hingaia Peninsula School
Hobsonville Primary School
Kaikohe Intermediate School
Massey University Student Amenities
NZMA
Ormiston Primary
Ormiston Junior College
Ormiston Senior College
Papamoa College
PPP3 Schools
Rolleston Collage
Shirley Boys High School
Silverstream Kindergarten
Stonefields Primary School
St Francis of Assisi Catholic School
St John's Hill School
St Peter's College
Te Kahui Auaha Campus
University of Auckland
Victoria University
Waiariki Institute of Technology
Wellington East Girls College

HEALTH

Auckland Hospital
Haematology & Bone Marrow Transplant Ward
Auckland Surgical Centre
Cambridge Vets
Christchurch Hospital CHOC
Doctors on Riccarton
Dunedin Community Hospice
Forte Health
Hastings Health Centre
Hutt Hospital
Kauri Healthcare
Merchant Quarter - Health, New Lynn
Mercy Radiology
Middlemore Acute Mental Health Unit
Middlemore Hospital Cafeteria
Rotorua Eye Clinic
Silverdale Medical & Surgical
Southern Cross Hospital, Wairau Road
Surgery on Shakespeare
Tokoroa Medical Centre
Tristram Clinic
Waikato Hospital
Top North Physiotherapy
Shortland Health

HOSPITALITY

Brew on Quay
Don Rowlands Centre
Everybody Eats
Henri & Co
McDonalds
Motion Entertainment
Petone Working Men's Club
Snow Planet
The Famous Grouse Hotel
The Postman's Leg
Waipuna Hotel & Conference Centre
Windross Farm Golf Clubrooms
GameOn

AGED CARE

Burlington Care Home
Craigweil House
Eastcliffe on Orakei
Northbridge
Northlit Lifestyle
O'Conor Home
Powley House
Rawhiti Estate
Rangiura Resthome
Windermere
Woburn Apartments

RESIDENTIAL

Bellus Apartments
Hallmark Homes Show Home
Hypatia Apartments
The Isaac Apartments
Unilodge

WORKPLACE

ADInstruments
Adshel Ooh Media
Aecom
ASC Architects Office
Bank of New Zealand
Barristers Chambers
Calder Stewart
Consultancy House
Crown Relocations
Cubro
Datacom
Deloitte Centre
Department of Conservation
Environment Canterbury
Ernst & Young
Fisher & Paykel Product Development
FNZ Wellington
Goodman Head Office
Hampton Jones
Justice and Emergency Precinct
KPMG
Maui Street
Mystery Creek Events Centre
NEC
NZ Home Loans
Opus
Panalpina Logistics
Parininihi ki Waitotara
Power Farming
Public Trust Building
Strategy Design & Advertising
Telecom HQ
Three Sixty Architects
Trade Me
Transpower
TRUE
Trustpower
Z Energy
130 Ponsonby Road
Wynn Williams

SPORTS

Anytime Fitness
ASB Stadium
AUT Millennium Centre Pool
Avantidrome
Axis Sports Medicine
Body Tech
Bodyneed
Christchurch Squash Club
Fastlane Fitness
Fraser Park Sportsville
Les Mills
Lincoln Event Centre
Multisport Gymnasium, NSW
Next Gen Health & Lifestyle Club
Nga Taiatea High School Gym
Snap Fitness
Taurama Aquatic Centre & John Guise Indoor Stadium
The Blues High Performance Training Centre
The Gardens School Gym

PUBLIC

Auckland Council Customer Service Centre
Reformed Church of Bishopdale
Bill Robertson Library
Catherine McAuley Centre
Changing Places
Christchurch International Airport Retail Expansion Centre
Church of Christ
Expansion Centre
Life Church
Lincoln Library
Mangere Library
MTG Hawke's Bay
Nelson District Court
Paeroa Library
Pakuranga Library
Pataka Museum
Singapore Cinema Complex
Sir Edmund Hillary Library
Te Atatu Library & Community Centre
Te Awamutu Library
Te Papa - Te Taiaroa Nature Exhibition Centre
The Cloud
Turanga - Christchurch Central Library

RETAIL

Audi
ANZ Newmarket
Glassons
Health New Lynn
7 Day Pharmacy
Indian Motorcycle
Kitchen Things Luxury Collection Showroom
Lego Newmarket
Liquorland
Spark Halo Newmarket
Swanson Wine & Spirits
Toyota
Ubertec
VW
Westfield Mall

BUILDING SYSTEMS

Allstars Inn on Bealey
Appleby Marketplace
Canada Street
Deakin University
Christchurch KEB Building
KEB Building 1 & 2
Paora Street Apartments, Orakei
University of Auckland
Westfield Newmarket

TREDSAFE

Charlotte Hornets Stadium, USA
Perth Stadium, Australia
Smales Farm, New Zealand

RECENT PROJECTS

Appleby Marketplace
ABI Hospital
Chemist Warehouse
Christchurch KEB Building
City Fitness Gyms
Countdown
Deakin University
DLA Piper
DuVal Head Office
East Coast Bays Fire Station
Four Square
Johnsonville Library
Kmart

Meadowbank Primary School
Mi Pad Hotel Queenstown
New World
Ministry of Social Development
NZ Bus
NZ Hockey, Rosedale
NZ Seventh Day Adventist Schools
Radius Care Pacific People Fitout
Salvation Army
Sky Stadium
Super Liquor

Te Uho O Te Nikau Primary School Flat Bush
Tamaoho School
Torbay Primary School
Richmond Road Primary School
The Central - Naumi Hotel Queenstown
Te Hono - New Plymouth Airport Terminal
Paerata School
Pak n Save
Paora Street Apartments, Orakei
Price Waterhouse Coopers

PPG Wrightson
University of Auckland
UoA 507 Health and Science
UoA B405 Facility of Engineering
Vanguard Apartments
Wairarapa Village
Westfield Newmarket
Woburn Apartments
Woburn Rest Home
Woodview HQ
St Andrew's Village - The Terraces

A dark, high-contrast, black and white photograph of a textured surface, possibly bark or stone, with the word "READY" centered in white capital letters. The texture is highly detailed, showing various cracks, crevices, and irregular shapes. The lighting is dramatic, with deep shadows and bright highlights that emphasize the roughness of the material. The word "READY" is positioned in the center of the frame, standing out against the dark background.

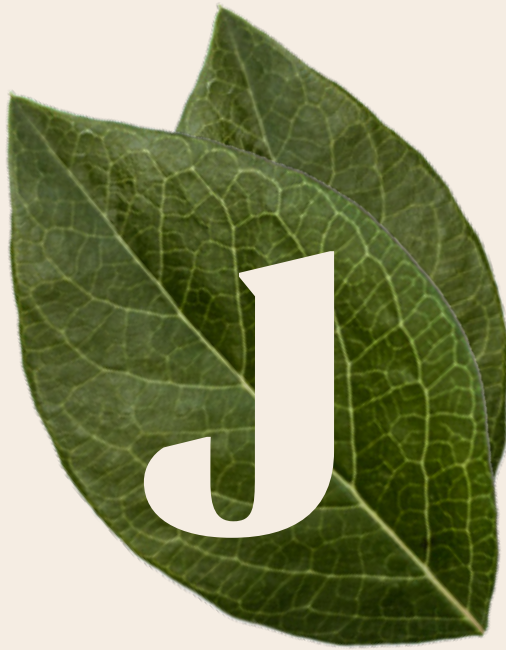
READY

TO GET INSPIRED?

Talk to one of our experts or visit
us online at jacobsen.co.nz
or call 0800 800 460.

**Whatever your space, our top international brands
bring the best in materials and textures.**

- Carpet
- Carpet Tiles
- Laminate
- Building Systems
- Luxury Vinyl Tiles
- Vinyl
- Rubber
- Flooring Accessories
- Porcelain and Ceramic Tiles
- Wood
- Wall Coverings
- Linoleum



Jacobsen[®]

Inspired flooring since 1962.

jacobsen.co.nz